

**PRESA DI FORZA A
COMANDO PNEUMATICO
PNEUMATIC CLUTCH
POWER TAKE-OFF**

CODICE PTO
PTO CODE

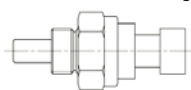
058-001

CAMBIO
GEARBOX

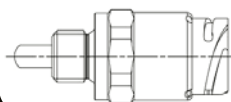
CLARK-EATON



Interruttore segnalazione PTO inserita / PTO pressure signal switch

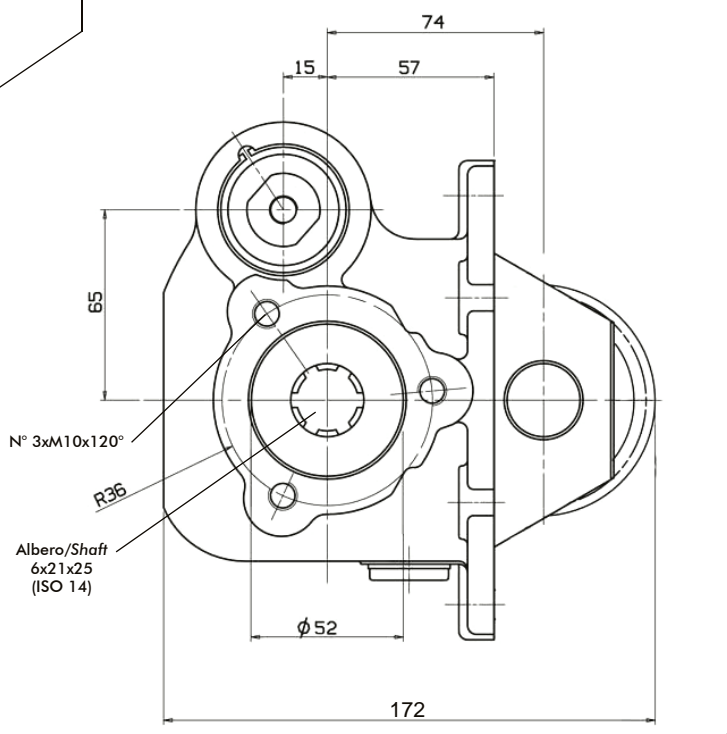
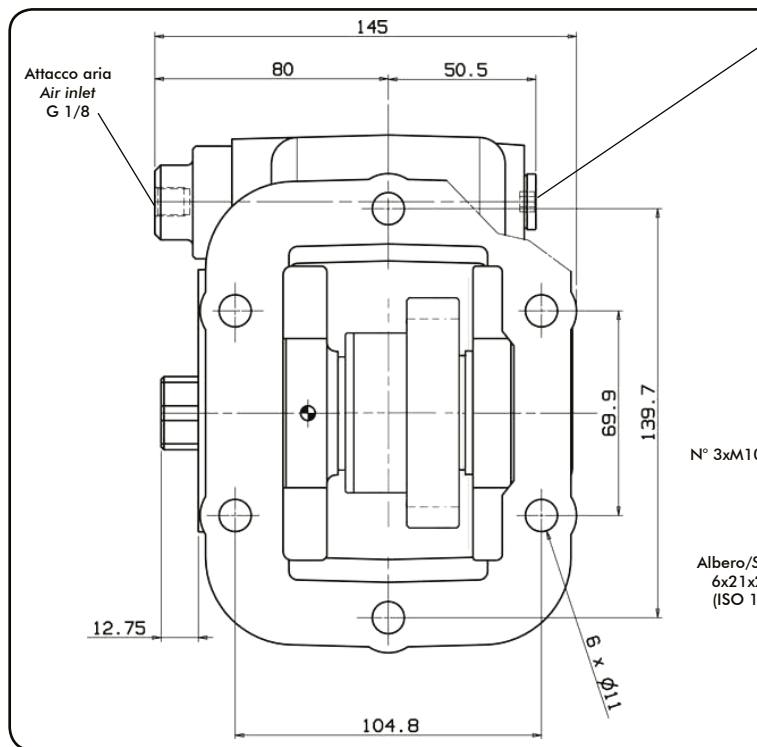
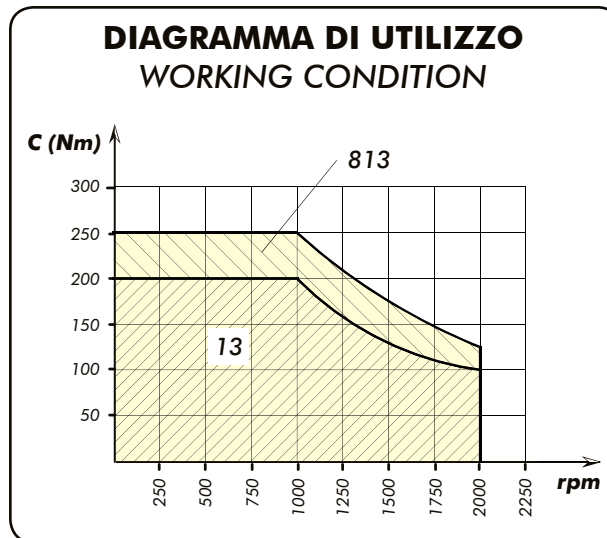


PACKARD
311-001-00116



DIN 72585
311-001-00205

OPTIONAL
Da ordinare separatamente
To be ordered separately



Tipo cambio Gearbox	Codice PTO PTO code	Versione Version	Giri pto a 1000 giri motore Pto ratio@1000 eng.rpm	Coppia massima Max torque Nm	Lato montaggio Mounting side	Uscita Output	Rotazione Rotation	Kit di montaggio Mounting kit	Peso Weight Kg
CL3905 A/B/C	058-001-00132	13	995 rpm	200	Dx Right	Post. Rear	Ora. Cw	154-2-2171	9
FSO 4305 A/B/C	058-001-08134	813		250					
FSO 4405 A/B/C									

Data: Mercoledì 19 settembre 2012

Codice foglio:997-258-00113 Rev:AA