

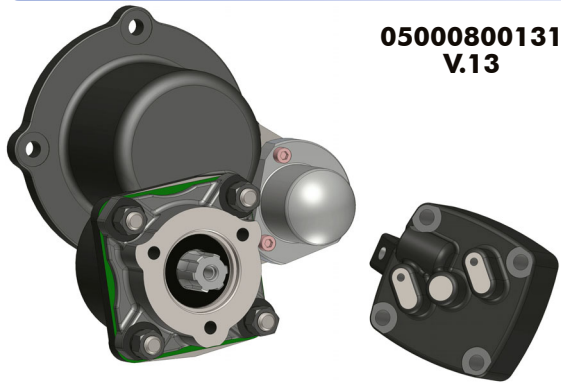
PRESA DI FORZA A COMANDO PNEUMATICO PNEUMATIC CLUTCH POWER TAKE-OFF

CODICE PTO
PTO CODE

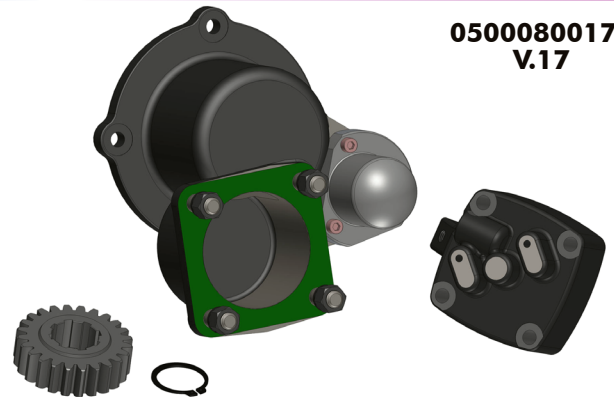
050008

CAMBIO
GEARBOX

**EATON-FULLER
SHAANXI FAST G**

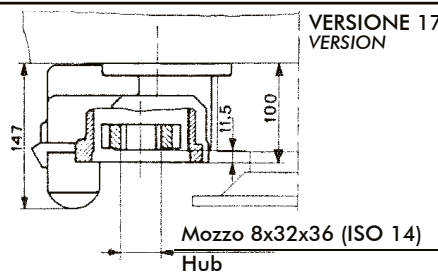
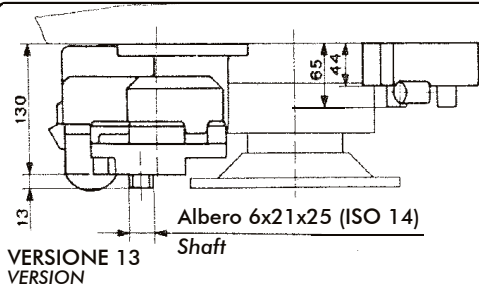


05000800131
V.13

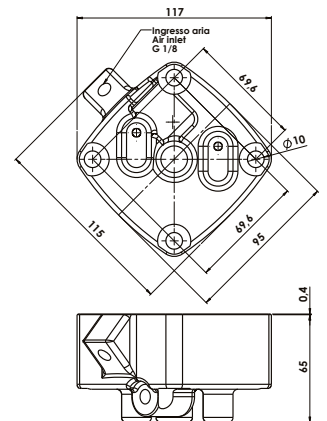


05000800177
V.17

**Presenza di forza con uscita non supportata.
È necessario l'utilizzo di pompe con albero supportato.
PTO with loose gear output. Mounting only possible with hydraulic pumps
having bearing on the shaft.**

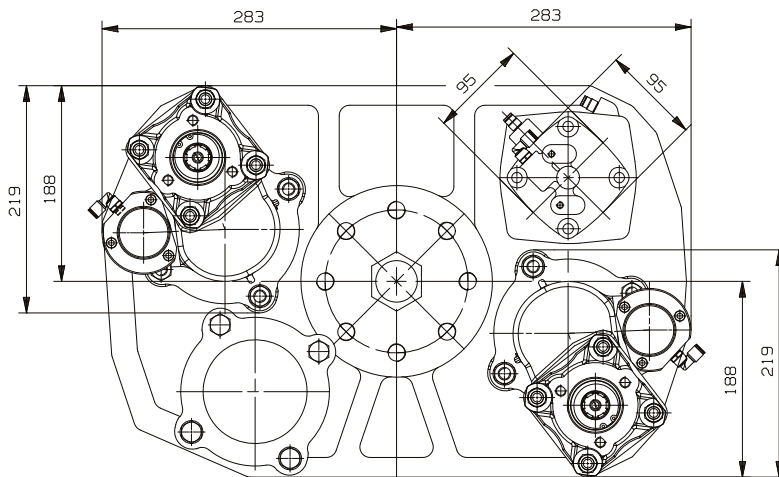


**Gruppo cilindro per
messa a folle.**
Clutch inhibitor assembly



Codice/Code
50002200021

**Già compreso nel codice
PTO. Solo per ricambi.**
Already included in PTO code.
Spare parts only.



11/02/2021

99725000813 Rev. AD

Tipo cambio Gearbox	Codice PTO PTO code	Versione Version	Giri pto a 1000 giri motore Pto ratio@1000 eng.rpm	Coppia massima Max torque	Lato montaggio Mounting side	Uscita Output	Rotazione Rotation	Kit di montaggio Mounting kit	Peso Weight
EATON-FULLER SHAANXI FAST G	05000800131	13	rpm	Nm					
			Vedi indice See index	250	Poster. Rear	Poster. Rear	Ant. Ccw	15400305060	10,8
EATON-FULLER SHAANXI FAST G	05000800177	17							8,4

pag.1



O.M.F.B. Hydraulic Components
We reserve the right to make any changes without notice.
Edition 2011.05 No reproduction, however partial, is permitted.
Via Cave, 7/9 25050 Provaglio d'Iseo (Brescia) Italy Tel.: +39.030.9830611
Fax: +39.030.9839207-208 Internet:www.omfb.it e-mail:info@omfb.it

**COMPANY WITH
QUALITY SYSTEM
CERTIFIED BY DNV GL
= ISO 9001:2015 =**