

PRESA DI FORZA A COMANDO PNEUMATICO

PNEUMATIC CLUTCH POWER TAKE-OFF

CODICE PTO
PTO CODE

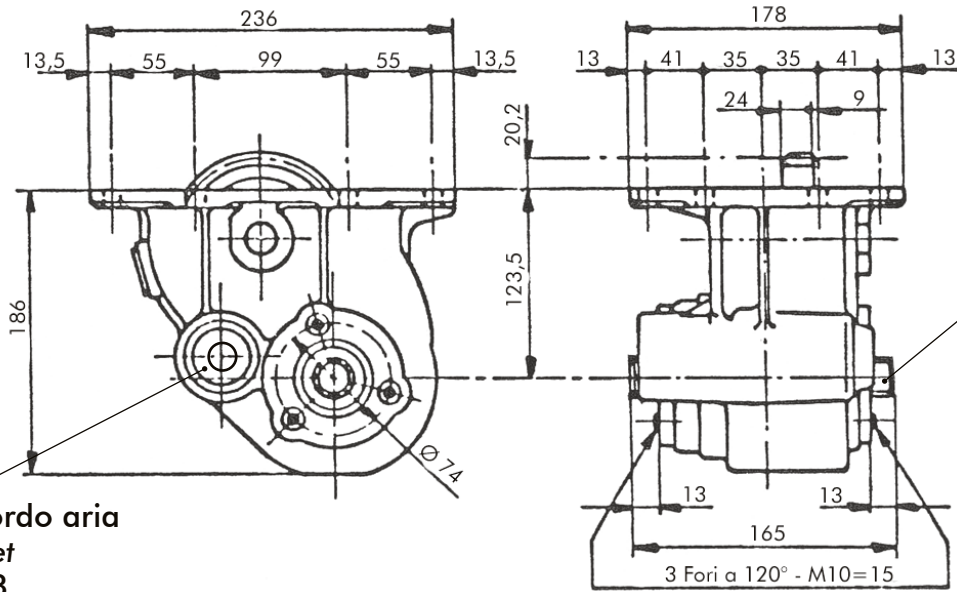
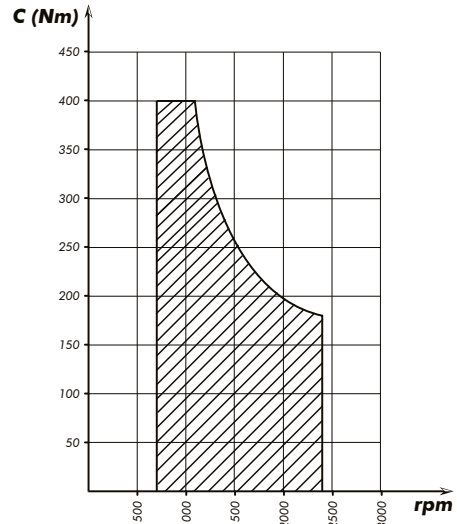
50-6

CAMBIO
GEARBOX

FULLER



DIAGRAMMA DI UTILIZZO WORKING CONDITION



Albero/Shaft
6x21x25
(ISO 14)

Attacco raccordo aria
Air inlet
G 1/8

Tipo cambio Gearbox	Codice PTO PTO code	Versione Version	Giri pto a 1000 giri motore Pto ratio@1000 eng.rpm	Coppia massima Max torque	Lato montaggio Mounting side	Uscita Output	Rotazione Rotation	Kit di montaggio Mounting kit	Peso Weight
Vedi indice See index	50-6-99	9	rpm Vedi indice See index	Nm 400	Inf. Low side	P/A R/Fwd	O/A C/C	154-3-6014	Kg 15,4

pag.1



O.M.F.B. S.p.A. Hydraulic Components
We reserve the right to make any changes without notice.
Edition 2004.02 No reproduction, however partial, is permitted.
Via Cave, 7/9 25050 Provaglio d'Iseo (Brescia) Italy Tel.: +39.030.9830611
Fax: +39.030.9839207-208 Internet:www.omfb.it e-mail:info@omfb.it

COMPANY WITH
QUALITY SYSTEM
CERTIFIED BY DNV GL
= ISO 9001 =

Rev://

Codice foglio: 997-250-00699

Rev://

Codice fascicolo:

Data: Lunedì 2 febbraio 2004